

FOURTH GRADE

THE HISTORY OF FLORIDA LESSON PLANS



THE GREAT DEPRESSION THROUGH WORLD WAR II

The Historical Society of Palm Beach County and
Richard and Pat Johnson Palm Beach County History Museum
300 N. Dixie Highway, West Palm Beach, FL 33401
www.hspbc.org • 561.832.7965

THE GREAT DEPRESSION THROUGH WORLD WAR II

LESSON PLANS-TEACHER COPY

GRADE LEVEL: 4th grade and can be adapted for other grades.

SOCIAL STUDIES STANDARDS:

SS.4.A.7.2: Summarize challenges Floridians faced during the Great Depression.

SS.4.A.7.In.b: Identify challenges Floridians faced during the Great Depression.

SS.4.A.7.Su.b: Recognize challenges Floridians faced during the Great Depression.

SS.4.A.7.Pa.b: Recognize a challenge of the Great Depression.

SS.4.A.7.3: Identify Florida's role in World War II.

SS.4.A.7.In.c: Recognize Florida's role in World War II.

SS.4.A.7.Su.c: Recognize that Florida played a role in World War II.

SS.4.A.7.Pa.c: Recognize that people in Florida were involved in a war.

SS.4.A.9.1: Utilize timelines to sequence key events in Florida history.

SS.4.A.9.In.a: Complete a timeline to sequence important events in Florida history.

LANGUAGE ARTS STANDARDS:

LAFS.4.RI.1.1: Refer to details and examples in a text when explaining what the text says explicitly and when drawing inferences from the text.

LAFS.4.RI.1.AP.1a: Refer to details and examples in a text that are relevant to explaining what the text says explicitly.

LAFS.4.RI.1.AP.1b: Refer to details and examples in a text that are relevant to drawing basic inferences from an informational text.

LAFS.4.RI.1.2: Determine the main idea of a text and explain how it is supported by key details; summarize the text.

LAFS.4.RI.1.AP.2a: Determine the main idea of an informational text.

LAFS.4.RI.1.AP.2b: Identify supporting details of an informational text.

LAFS.4.RI.1.AP.2c: Identify how ideas are organized to summarize the text.

LAFS.4.W.1.2: Write informative/explanatory texts to examine a topic and convey ideas and information clearly.

LAFS.4.W.1.AP.2a: Introduce a topic clearly and group related information in paragraphs and sections.

LAFS.4.W.1.AP.2b: Develop the topic (add additional information related to the topic) with relevant facts, definitions, concrete details, quotations or other information and examples related to the topic.

LAFS.4.W.1.AP.2c: Include formatting (e.g., headings), illustrations and multimedia when appropriate to convey information about the topic.

LAFS.4.W.1.AP.2d: Link ideas within categories of information, appropriately using words and phrases (e.g., another, for example, also, because).

LAFS.4.W.1.AP.2e: Use increasingly precise language and domain-specific vocabulary over time to inform about or explain a variety of topics.

LAFS.4.W.1.AP.2f: Provide a concluding statement or section to support the information presented.

LAFS.4.W.3.7: Conduct short research projects that build knowledge through investigation of different aspects of a topic.

LAFS.4.W.3.AP.7a: Follow steps to engage in a short research project (e.g., determine topic, generate research questions, locate information on a topic, organize information related to the topic, draft a permanent product).

LAFS.4.W.3.AP.7: Build knowledge on topics through continued engagement in research investigation.

INTRODUCTION:

This section covers the years of President Franklin D. Roosevelt and his New Deal Programs that helped pull Florida and the nation out of the Great Depression. The impact of World War II is discussed and the effects it had on Florida.

PURPOSE:

To give students and understanding of the programs that the government developed to help get the economy running during the Great Depression. Students will understand the effects World War II had on Florida.

OBJECTIVES:

- Students will understand and list the programs President Franklin D. Roosevelt instituted to help the United States during the Great Depression.
- Students will be able to list how people and places in Palm Beach County contributed to the war effort.

MATERIALS:

- HSPBC's *The History of Florida* pages 1-4 (included)
- Answer Key (pages 5-6)
- Worksheet 1 (page 4)
- Quiz (page 7)
- Quiz Answer Key (page 8)
- Computer

INSTRUCTIONS:

1. Upload the teacher and student copies of *The History of Florida* Lesson Plans PDF.
2. Students read and complete the activities on pages 1-4 in *The History of Florida* (included). Answer Key is on pages 5-6.
3. Students take the quiz (page 7) and submit to the teacher. Answer Key is on page 8.
4. Students complete Worksheet 1 (page 4) and submit to the teacher.

THE GREAT DEPRESSION THROUGH WORLD WAR II WORKSHEET 1

Instructions: . Read pages 1-4 of *The History of Florida* and answer the questions below. When you are finished, submit the answers to your teacher.

Name:

Date:

1. In your own words, explain what *flying the hump* was.
2. During the *Great Depression*, American families lived by the motto: “Use it up, wear it out, make do or do without.” What does this mean?
3. Describe three ways Palm Beach County contributed to the war effort.

THE GREAT DEPRESSION THROUGH WORLD WAR II

ANSWER KEY FOR ACTIVITIES ON PAGE 2 OF

THE HISTORY OF FLORIDA

READING CHECK:

1. What did the Civilian Conservation Corps (CCC) do for Florida?

Answer: The CCC gave jobs to more than 40,000 young men in Florida. Some people were put to work to help preserve natural resources. The CCC planted over thirteen million trees in Florida. They created many state parks and wildlife preserves. In addition, the people working with the CCC replaced the Overseas Railroad with the Overseas Highway.

2. What occurred in October 1929?

Answer: The stock market crashed, and the entire nation went into the Great Depression.

3. Who was Zora Neale Hurston?

Answer: Zora Neale Hurston was an Anthropologist, folklorist, and novelist, who traveled the south collecting stories and writing about rural areas.

4. Go online and research Hurston. Write a one-page report about her and her contributions.

Answer: (student responses will vary).

AS YOU READ:

1. List and explain the various ways the people and places of Palm Beach County helped the war effort.

Answer:

1. More than 250,000 Floridians joined the United States Armed Forces.
2. Many military bases were established in Florida, which helped train pilots and soldiers.
3. Morrison Field became an official military airbase and the Army opened another airbase in Boca Raton.
4. Hotels in the state were used for military housing and hospitals. (Boca Raton Club and the Breakers)

THE GREAT DEPRESSION THROUGH WORLD WAR II

ANSWER KEY FOR ACTIVITIES ON PAGE 4 OF

THE HISTORY OF FLORIDA

READING CHECK:

1. What does POW stand for?

Answer: Prisoner of War

2. What school was at Boca Raton Army Air Field?

Answer: Air Corps' Radio School No. 2

3. The word *radar* is an acronym. What does it stand for?

Answer: Radio Detection and Ranging

4. When did Morrison Field open?

Answer: 1940

SHORT ANSWER:

1. Why did the prisoners at Belle Glade POW Camp go on strike?

Answer: Prisoners initiated a strike when their cigarette rations were reduced.

2. What kind of work did the prisoners-of-war do?

Answer: They worked in a bean-canning factory, help build the Lake Okeechobee Dike, and harvest sugarcane.

THINK ABOUT IT:

1. Why did the government take away people's land to build Boca Raton Army Air Field?

Answer: The land was needed for the Army Air Field, and the US Government forced them to sell their land under the Second War Purpose Act.

2. An airplane from the 55th Squadron, 1st Air Weather Group, made a special flight in October 1946. What kind of airplane was it and what did it do for the first time?

Answer: They flew a B-29 over a hurricane for the first time from Morrison field with two photographers and a public relations officer on board to cover the event.

THE GREAT DEPRESSION THROUGH WORLD WAR II QUIZ

Instructions: Once you complete the quiz, submit it to your teacher.

Name:

Date:

1. The purpose of the WPA was to:
 - A) provide artwork to parks with local artists.
 - B) provide palm trees to settlers without coconuts.
 - C) provide employment to the unemployment.
 - D) provide the CCC with the trees to plant.
2. Florida regained economic strength through its involvement with:
 - A) The Great Depression
 - B) The growth of crops
 - C) World War II
 - D) World War I
3. The most devastating hurricane of the century occurred in:
 - A) 1925
 - B) 1928
 - C) 1927
 - D) 1929
4. One industry that helped bring tourism to the state was:
 - A) automobiles
 - B) aviation
 - C) writing
 - D) Farming
5. The state reptile is the:
 - A) crocodile
 - B) alligator
 - C) gecko
 - D) anaconda

THE GREAT DEPRESSION THROUGH WORLD WAR II

QUIZ ANSWER KEY

1. The purpose of the WPA was to:

- A) provide artwork to parks with local artists.
- B) provide palm trees to settlers without coconuts.
- C) provide employment to the unemployment.**
- D) provide the CCC with the trees to plant.

2. Florida regained economic strength through its involvement with:

- A) The Great Depression
- B) The growth of crops
- C) World War II**
- D) World War I

3. The most devastating hurricane of the century occurred in:

- A) 1925
- B) 1928**
- C) 1927
- D) 1929

4. One industry that helped bring tourism to the state was:

- A) automobiles**
- B) aviation
- C) writing
- D) Farming

5. The state reptile is the:

- A) crocodile
- B) alligator**
- C) gecko
- D) anaconda

THE GREAT DEPRESSION THROUGH WORLD WAR II COMMEMORATIVE STAMP ACTIVITY

VISUAL ARTS STANDARDS:

VA.4.S.1.2: Explore and use media, technology, and other art resources to express ideas visually.

VA.4.S.1.In.a: Experiment with tools and techniques as part of the art-making process.

VA.4.S.1.Su.a: Explore the use of art tools, processes, and media.

VA.4.S.1.Pa.a: Recognize basic art tools, processes, and media.

VA.4.S.3.3: Follow procedures for using tools, media, techniques, and processes safely and responsibly.

VA.4.S.3.In.b: Follow directions for safety procedures and explain their importance in the art room.

VA.4.S.3.Su.b: Demonstrate the safe use of a variety of visual art tools, media, techniques, and processes.

VA.4.S.3.Pa.b: Demonstrate the safe use of selected visual art tools and media.

OBJECTIVE:

The students will create commemorative stamps depicting important events in Florida's history during the Depression Era.

VOCABULARY:

U-boats, Morrison Army Base, the storms of 1926 and 1928, Palm Beach Community College

MATERIALS:

- 8x10 copy paper, pencils, erasers, markers, crayons, and color pencils.
- Example of stamp (page 10).

INSTRUCTIONS:

1. Discuss with students the variety of stamps that the U.S. Postal Service creates every year. Ask the students why they think certain people, symbols, scenes, etc, are depicted on stamps.
2. Instruct the students to create their own stamp depicting what they think would most represent Florida history during the Depression Era.
3. Discuss the importance of U-boats, the Morrison Army Base, the storms of 1926 and 1928, Palm Beach Community College, and other relevant subjects regarding Florida history.
4. Encourage students to sketch some ideas out first. They can then pick out their best sketch to draw and color.
5. Once completed, students can give a presentation about their stamp in video format.



Courtesy of Sheila A. Brennan

THE GREAT DEPRESSION THROUGH WORLD WAR II

FLORIDA IN THE GREAT DEPRESSION

The 1926 Land Bust, followed by devastating hurricanes in 1926 and 1928, eroded confidence in Florida's economy and sent it into an economic depression. In October 1929, the stock market crashed, and the entire nation went into the Great Depression, which would last until World War II. Also in 1929, Florida's citrus crops suffered from a terrible infestation of the Mediterranean fruit fly, putting more stress on the economy.

During the years of the Great Depression, Florida benefitted during the winter months from tourism and people who visited their second homes in the state. Tin Can Tourists, those who built their own motor homes, also visited Florida during the winter, although police checked visitors at the state border to be sure they could support themselves during their stay. Nevertheless, there was not enough income in Florida, its government had no way to provide relief work, and the state constitution forbade deficit spending. Many people had no way to earn a living.

The Florida State Racing Commission, established in 1931, legalized gambling at horse and dog racing tracks and at Jai Alai frontons, which allowed the state to



Courtesy of State Archives of Florida

President Roosevelt in Jacksonville

earn revenue from the taxes paid by winners. However, this was not much help because people did not have much money to place bets.

When Franklin D. Roosevelt became president of the United States, he established relief organizations to put people back to work.

THE NEW DEAL

In 1932, Franklin Delano Roosevelt ran for president, promising a New Deal for Americans. He said he would lower the unemployment rate and boost the economy. After his inauguration in March 1933, Roosevelt launched his Alphabet Soup of initiatives across the country. Two programs that helped Florida by providing jobs were the Civilian Conservation Corps (CCC) and the Works Progress Administration (WPA).

The CCC was created and brought to Florida in 1933, hiring more than 40,000 young men. They

were put to work helping in many areas: establishing new state parks, and planting over thirteen million trees. When the Overseas Railroad was destroyed by the 1935 Labor Day hurricane, they helped replace it with the Oversea Highway. This new road opened to vehicles in 1938, connecting Key West with the mainland; parts of it are still used today.

The WPA created about 40,000 jobs for unemployed artists, musicians, writers, researchers, and teachers. Artists created colorful paintings for libraries, post offices, and other public buildings. Writers interviewed and recorded local people to collect history and stories. One writer, Zora Neale Hurston, was an anthropologist, folklorist, and novelist, and traveled the South collecting stories and writing about its rural areas. Veronica Hull interviewed residents of the Conch community in Riviera Beach while photographer Charles Foster recorded their images.

In addition to these two programs, Florida's industries began to grow again, helping the state's economy. The citrus industry

STANDARDS:

SS.4.A.7.2: Summarize challenges Floridians faced during the Great Depression.

SS.4.A.7.3: Identify Florida's role in World War II.

SS.4.A.9.1: Utilize timelines to sequence key events in Florida history.

LAFS.4.RI.1.1: Refer to details and examples in a text when explaining what the text says explicitly and when drawing inferences from the text.

LAFS.4.RI.1.2: Determine the main idea of a text and explain how it is supported by key details; summarize the text.

LAFS.4.W.1.2: Write informative/explanatory texts to examine a topic and convey ideas and information clearly.

LAFS.4.W.3.7: Conduct short research projects that build knowledge through investigation of different aspects of a topic.

ACTIVITIES!

READING CHECK:

1. What did the Civilian Conservation Corps (CCC) do for Florida?
2. What occurred in October 1929?
3. Who was Zora Neale Hurston?
4. Go online and research Hurston. Write a one-page report about her and her contributions.

AS YOU READ:

1. List and explain the various ways the people and places of Palm Beach County helped the war effort.

developed new ways to package and can fruit that allowed the fruit to stay fresh longer. Paper mills were built in several Florida cities, including Jacksonville, Panama City, and Pensacola. Finally, the aviation industry brought tourists to the state by planes; by 1939, three airlines operated in Florida. More tourists meant that more money was spent in Florida. President Roosevelt's New Deal helped Florida's economy prosper.

WORLD WAR II

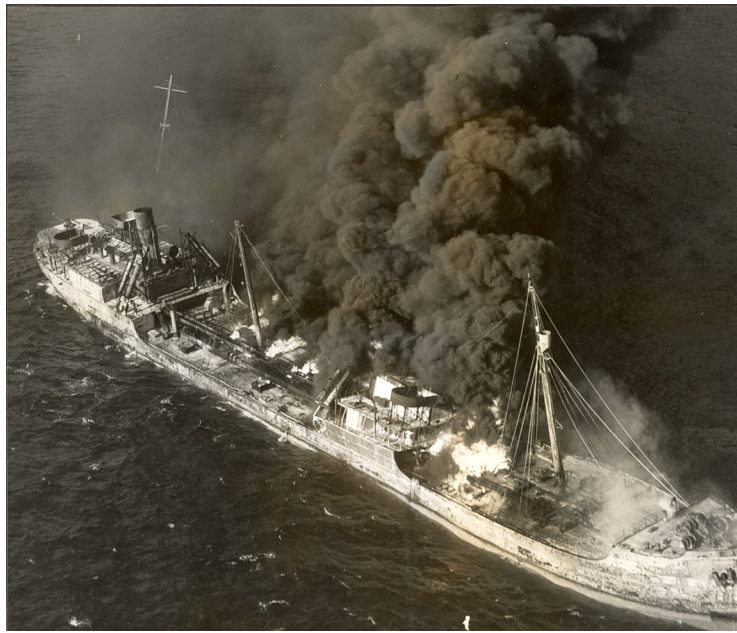
World War II helped America, including Florida, recover from the Great Depression. Florida businesses produced war supplies. More than 250,000 Floridians



Courtesy of HSPBC

Barracks for soldiers at Morrison Field

joined the U.S. Armed Forces. The warm climate and flat land made the state a perfect place to train pilots and other soldiers. The military established bases throughout Florida, including



Courtesy of HSPBC

A WWII ship on fire off the coast of Florida.

Fort Myers, Lakeland, Vero Beach, West Palm Beach, Boca Raton, and Miami, which provided job opportunities for local civilians.

During the war, thousands of troops were stationed or trained in Florida. In 1941, Morrison Field in West Palm Beach became an army airbase. Only a year later, the army opened an airbase in Boca Raton

and took over the nearby Boca Raton Club, turning it into housing for military trainees. Florida hotels were used for military housing and hospitals. The Palm Beach oceanfront hotel, The Breakers, was converted into Ream General Army Hospital to treat wounded soldiers.

In 1942, the German navy began attacks by submarines along Florida's Atlantic coast. German subs, called U-boats, torpedoed and sank or damaged ships carrying supplies to Europe. The Germans hoped their

attacks would weaken the U.S war plan.

Many of the U-boat attacks came at night. German submarines saw outlines of the American ships against the bright shore lights. Residents along the coast, therefore, had to dim or hide their lights behind curtains. To slow down the German U-boats, Civil Air Patrol squadrons patrolled the coastal waters. This effort helped to stop the German attacks along Florida's coast by 1943.

While many Floridians were off fighting overseas, the rest of the residents helped with the war at home. They worked in the growing shipbuilding and farming industries. Women filled many jobs left by men who had joined the military, working on farms and factories in record numbers. They picked crops and packaged them to be shipped to the troops. Everyone in Florida worked to help end the war. Schools held contests to see who could collect the most scrap metal or paper to support the war effort.

MORRISON FIELD

In 1940, the U.S. Army Air Corps, forerunner of the U.S. Air Force, established Air Transport Command at Morrison Field, which had opened in 1936 west of West Palm Beach. The army added barracks and other buildings, and a hangar for 3,000 soldiers who would be stationed there during the coming war.

More than 45,000 troops either trained at or flew out of West

Palm Beach for destinations around the world, including for the invasion of Normandy, France, on D-Day. As many as 250 women from the Women’s Army Corps (WAC) also served at Morrison Field. The 313th Material Squadron from Miami Municipal Airport moved to Morrison Field in 1942 to handle air cargo and maintain the airport and its aircraft. A thousand men worked around the clock to overhaul, repair, and test aircraft before returning them to service.

Military aircraft flew between Morrison Field and India, from which they made trips to China. This trip over the Himalayan Mountains, nicknamed “flying the hump,” took over two weeks each way. The planes made stops in Puerto Rico, British Guinea, and Brazil before crossing the 1,428 miles of ocean to Ascension Island. From there, they stopped in Liberia, then flew up the west coast of Africa and across the Sahara Desert to French Morocco in North Africa, and on to India. Military secrecy demanded that Palm Beach County’s civilians had little idea of the importance of this command until after it was deactivated in 1947.

The Army Air Force established the 1st Air Weather Group at Morrison Field in 1946 to administer, train, equip, and organize the four squadrons that gathered weather information that were then assigned to the Air Weather Service; it had started its first squadron in Ohio in 1942. The 55th Squadron flew a B-29 over a hurricane for the first time from



Courtesy of HSPBC Grace Morrison. The first woman to pilot solo in Palm Beach County.

Morrison Field on October 7, 1946, with three photographers and a public relations officer on board to cover the event.

Morrison Field was deactivated in June 1947 and returned to Palm Beach County’s control. A year later, county commissioners voted to rename the facility Palm Beach International Airport, even though the community had mixed feelings about losing the name that held historical significance, and that thousands of former servicemen and women might choose to revisit.

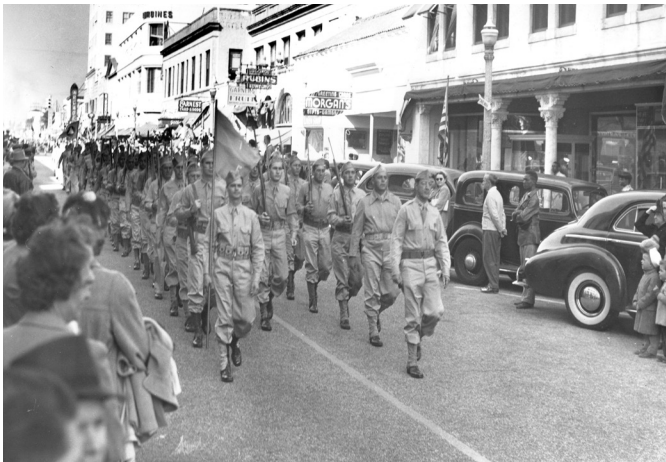
From 1951 to 1953, part of the airport served again as an air force base, where 23,000 airmen trained during the Korean War. The base was deactivated in 1959 and returned to Palm Beach County once again. As air traffic has increased, the airport has been expanded to accommodate travelers. As a memorial to its service as a military base, the airport dedicated a new terminal in 1988 to U.S. Navy Commander David

McC Campbell (1910-1996), a lifelong resident of Palm Beach County and World War II flying ace who received the Congressional Medal of Honor.

BOCA RATON ARMY FIELD

By the time World War II began, both the U.S. Navy and the Army Signal Corps had developed techniques for air and ground radar (an acronym for radio detection and ranging). A radar post in the hills above Pearl Harbor spotted

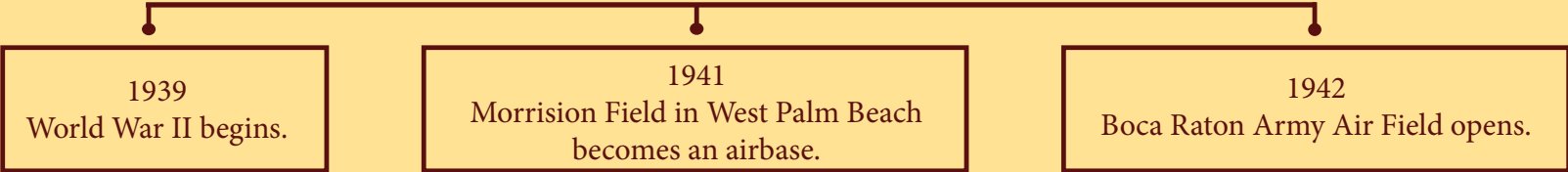
the Japanese attack in December 1941 but could not alert the main forces in time. The Signal Corps opened a radar school at Camp Murphy, now Jonathan Dickinson State Park in Martin County, and the Army Air Corps wanted a similar site nearby. They considered Vero Beach, but after campaigning by Boca Raton’s then mayor Jonas C. “Joe” Mitchell, the Air Corps’ Radio School No. 2 opened (No. 1 was in Illinois), on land that would become



Courtesy of HSPBC

Military parade on Clematis Street

Historical Timeline



ACTIVITIES!

READING CHECK:

1. What does POW stand for?
2. What school was at Boca Raton Army Air Field?
3. The word radar is an acronym. What does it stand for?
4. When did Morrison Field open?

SHORT ANSWER:

1. Why did the prisoners at Belle Glade POW Camp go on strike?
2. What kind of work did the prisoners-of-war do?

THINK ABOUT IT:

1. Why did the government take away people's land to build Boca Raton Army Air Field?
2. An airplane from the 55th Squadron, 1st Air Weather Group, made a special flight in October 1946. What kind of airplane was it and what did it do for the first time?

the site of Florida Atlantic University and Boca Raton Airport.

About fifty owners of property totaling more than 5,820 acres, including the Town of Boca Raton and the Lake Worth Drainage District, were forced to sell their land to the U.S. government under the Second War Purposes Act. As explained in the Miami Herald on May 17, 1942, owners were notified "to vacate immediately all the land west of the railroad at Boca Raton. No financial offer has been made by the government to the owners of the land, but an appraisal is being made."

Boca Raton Army Air Field officially opened on October 12, 1942. The army constructed more than 800 buildings and four runways, where B-17 pilots trained and airplanes came from all over to have radar installed. Cadets sometimes spent up to twenty hours per day on academic and military training to learn engineering, aerodynamics, and communications. After finishing their education at Yale University, these cadets became commissioned officers.

The Air Corps also took over the luxurious Boca Raton Club to house trainees and officers attending the radar training school. Conditions were anything but elegant, however. the expensive furnishings had been replaced by standard army bunks housing eight to a room, and poor water pressure made



Courtesy of National Archives

German prisoners of war in Florida

bathing difficult, but no excuse was allowed in completing the rigorous schedule. When the club became too crowded, officials turned the grounds, including the golf course, into a tent camp.

Although Boca Raton's population was only 723 in 1940, during the war years it increased by 30,000 servicemen and women, civilian employees, and their families. Over 100,000 troops passed through Boca Raton for training or en route to service in the Pacific or Europe. The activity created a boom for the area, as Boca Raton residents could not fill all the needs of the military alone. In 1944 the Boca Raton Club was returned to its owner and reopened as the Boca Raton Hotel and Club. The Boca Raton Army Air Field operated until 1947, when it closed.

BELLE GLADE POW CAMP

During World War II, the War Manpower Commission called for prisoner-of-war (POW) camps to be established in some states to fill the labor shortage caused by the draft. More than 9,000 German prisoners were sent to Camp

Blanding near Starke, Florida. From there, the POWs were assigned to one of the twenty-two camps in the state. From March to December 1945, after picking oranges in the Orlando area, about 250 POWs were sent to a camp just east of Belle Glade, next to the Everglades Experiment Station. Another camp was located at Clewiston in Hendry County.

The prisoners and camp guards ate the same food, as required by the Geneva Convention. Years later some of the guards reported having had a mutual respect and camaraderie with many of their captives. Two weeks after arriving, however, the prisoners initiated a strike when their cigarette rations were reduced. Because Americans were beginning to hear about Nazi concentration camps at that time, national attention and congressional reactions led to thirty-nine "troublemakers" being returned to Camp Blanding. Strikers were restricted to bread and water until they returned to work.

Many POWs worked in a bean-canning factory or helped to build the Lake Okeechobee Dike. Others harvested sugarcane from before 8 a.m. to about 3 p.m., for which they were paid eighty cents a day. While temperatures over 100 degrees and snakes often made the fieldwork miserable, many of the Germans enjoyed hunting snakes to make souvenirs from their skins.

When the Belle Glade camp closed, its flagpole was given to American Legion Post #20 at 101 S.E. Avenue D in Belle Glade.

CREDITS

PROJECT TEAM:

HISTORICAL SOCIETY OF PALM BEACH COUNTY

Casey Lipschutz, Education Coordinator
Debi Murray, Chief Curator
Rose Guerrero, Research Director

SCHOOL DISTRICT OF MARTIN COUNTY

Shela Khanal, Director,
Department of Title I/Migrant/ELL

SCHOOL DISTRICT OF PALM BEACH COUNTY

Lisa Lee, Principal,
Orchard View Elementary
Debbye Raing (Retired)
Margaret S. Newton (Retired)
Danielle Trembler, Writing Team Leader
Christel Akers
Maria Calas
Mary Ellen De Valle
Allison Dobrick
Cori Evans
Gale Fravel
Daisy Linares
Heather McCarroll
Tom Medcalf
Jen Minuskin
Eve Preefer
Roberta Privalle
Dr. Roger Rivner
Sandy Trujillo
Cynthia Vagedes
Jacqueline Zloch

HISTORICAL SOCIETY OF PALM BEACH COUNTY OFFICERS 2019-2020

Thomas M. Kirchhoff, Board Chair
Ross W. W. Meltzer, First Vice Chair
Mark Stevens, Second Vice Chair
Richard S. Johnson Jr., Secretary
Thomas Burns, CPA, Treasurer
Joseph Chase, Member at Large
Robert W. Ganger, Member Emeritus

BOARD OF GOVERNORS

Jeffrey Alderton
Christian Angle
John Archer
Margaret Cheryl Burkhardt
Sharon Daley
Graham G. Davidson
George L. Ford III
Mary Freitas
The Honorable Bradley G. Harper
Russell P. Kelley
George Mavlios
Sharon Merchant
Peter Nicoletti
Lisa McDermott Perez
Karen Swanson
Keith Williams
Vernique Williams

BOARD OF ADVISORS

Cressman D. Bronson
Katharine Dickenson
Mark B. Elhilow
George T. Elmore
Mr. & Mrs. William M. B. Fleming Jr.
Dennis Grady
William Graham
Dale R. Hedrick
Pat Seaton Johnson
Gary S. Lesser
The Honorable Karen Marcus
William A. Meyer
Penny Murphy
Carey O'Donnell
Harvey E. Oyer III
Jorge Pesquera
Sidney A. Stubbs Jr.
RADM Philip A. Whitacre USN (d. 2020)

EX-OFFICIO BOARD MEMBERS

Debra Robinson, School Board of Palm Beach County Member
Danielle Hickox Moore, Town of Palm Beach Council Member
Mack Bernard, Palm Beach County Commissioner

BENEFACTORS

Thomas Anderson & Marc Schappell
John Archer
Brenda McCampbell Bailey
Margaret Cheryl Burkhardt
Susan & Christopher Cowie
Martha DeBrule
Mark B. Elhilow
George T. Elmore
Frances & Jeffrey H. Fisher
Anneli & Robert W. Ganger
Lorrain & Malcom W. Hall
Pat Seaton Johnson
Russell P. Kelley III
Carol & Thomas M. Kirchhoff
Sanda & Jeremiah Lambert
Patricia Lambrecht
Patricia Lester
Sydelle Meyer
Pauline Pitt
J. Grier Pressly III
Deborah & Chuck Royce
Frances G. Scaife
Sonja & Mark Stevens
Annette Stubbs

STAFF

Jeremy W. Johnson, CAE,
President & CEO
Debi Murray, Chief Curator
Rose Guerrero, Research Director
Casey Lipschutz, Education Coordinator
Caroline Frazier, Marketing Coordinator
Sharon Poss, Office Administrator
Lise Steinhauer, Membership | Grant Writer | Museum Store
Rhonda Gordon, Volunteer and Outreach Coordinator

SCHOOL DISTRICT OF PALM BEACH COUNTY BOARD MEMBERS

Chuck Shaw, Chair
Debra Robinson, M.D., Vice Chair
Frank A. Barbieri Jr., Esq.
Karen M. Brill
Erica Whitfield
Marcia Andrews
Barbara McQuinn

SUPERINTENDENT

Donald E. Fennoy II, Ed.D.

CHIEF ACADEMIC OFFICER

Keith Oswald

DIVISION OF TEACHING AND LEARNING

Diana Fedderman, Assistant Superintendent
Mary Ann Colbert, Manager
Kristen Rulison, Manager

DIRECTOR, MULTICULTURAL EDUCATION

Francisco Oaxaca

K-5 SOCIAL STUDIES PROGRAM PLANNER/HOLOCAUST STUDIES/PROGRAM MANAGER

Maureen Carter

ELEMENTARY SOCIAL STUDIES RESOURCE TEACHER

Laureene Neubarth

Copyright © 2020 The School District of Palm Beach County, and the Historical Society of Palm Beach County